

# 2023 VTrans Large-scale Bicycle and Pedestrian Grant Application

---

1. Project Title: Coventry Village Center Sidewalks
  
2. Applicant Name(s): Village of Coventry
  
3. Project Contact Info:
  - a. Name: Stephanie Rondeau
  - b. Mailing Address: PO Box 8
  - c. Town: Coventry
  - d. Zip Code: 05825
  - e. Email Address: [planningcommission@coventryvt.org](mailto:planningcommission@coventryvt.org)
  - f. Phone Number: (802) 323-9883
  
4. Fiscal Information:
  - a. Accounting System  Automated  Manual  Combination
  - b. Unique Entity Identifier # UQLSRGXB41P4
  - c. Fiscal Year End Month
  
5. RPC(s)
  
6. Primary Facility Type:  Sidewalk  Bike Lane  Shared-use Path  
 Shoulder  
 Other (Please describe)
  
7. Approximate project length in feet : 1660

## 2023 VTrans Large-scale Bicycle and Pedestrian Grant Application

---

8. Project Description: Please give a brief description of the project (100 words or less.) Detailed information should be submitted as part of addressing the selection criteria. Be sure to include identifying streets or landmarks that the proposed project links at either end (e.g. New concrete sidewalk with granite curbing on Main St. from Elm St. to Maple St.).

Project includes approximately 1660 linear feet of 5-Foot concrete sidewalks with granite curbing and painted crosswalks. Sidewalks would be installed on both sides of Main Street through the village center from Conway Court to Hermanville Road with crosswalks for access to post office and community building locations. From Hermanville Road to US-5 a sidewalk would be installed on 1 side of main street potentially connecting to the school in the future as the kids walk these roads for exercise. This project would greatly increase the pedestrian safety within the village center as well as encourage walking and biking in the community.

# 2023 VTrans Large-scale Bicycle and Pedestrian Grant Application

---

## 9. Estimated Project Costs:

<b>Engineering/Administration/Project Manager:</b> Costs associated with survey, design, plans development, permitting, development of bid documents, bid analysis and Municipal Project Manager - typically around 25% of construction.	Engineering/ Admin/MPM Cost  \$ 201,000
<b>Right of Way:</b> Cost of appraisals, property owner compensation and associated legal fees (Minimum of \$5000 recommended).	ROW Cost
<b>Construction:</b> Cost of paying contractors to build projects, including a reasonable contingency. Please attach as much detail/ backup information as available to support the construction estimate.	Construction Cost  \$ 465,300
<b>Construction Inspection :</b> Cost to provide oversight of contractor during construction - typically around 15% of construction.	Const. Insp.Cost
<b>TOTAL DESIGN/CONSTRUCTION AMOUNT APPLIED FOR :</b> (including 20% local share)	\$ 666,300

## 10. Have you received any other grant funding for this project? Please describe and include the source of funding:

No Additional funding

# 2023 VTrans Large-scale Bicycle and Pedestrian Grant Application

---

11. Will you accept an award less than you applied for?  YES  NO

**IF YES**, please indicate below whether local funds will be used to make up the shortfall or if the project scope will be reduced:

Keep Scope of project the same and make up shortfall with other funds

Reduce project scope – Describe and provide cost breakdown (attach backup with supporting materials, if necessary)

Note: If the project scope is to be reduced, document what part of the project you would accept partial funding for and break out the costs associated with that part or segment. Attach additional pages if necessary. If adequate information is not provided, partial funding will not be considered. **Use Partial Funding Template provided by VTrans.**

June 9, 2023  
Stephanie Rondeau  
Planning Commission chair  
Coventry VT  
PO Box 8  
Coventry, VT 05829

Dear Mr. Pochop

The Village of Coventry is requesting funds for the purpose of design and construction of sidewalks along Main street. We believe this project fits under your bicycle and pedestrian grant program as the sidewalks would give cyclists and pedestrians a safe area for recreation and exercise within the community, while also creating better access to outlying roads often used for recreation.

Our vision and mission for this project as a Town is to support outdoor recreation while supplying a safe route for residents throughout the village center.

Completion of this sidewalk project will not only benefit the Town by supporting the health and well being of its residents, but also bring in people from out of town increasing the potential for traffic at our local establishments.

With this Grant we will build sidewalks on Main street throughout the village allowing safe pedestrian traffic from the residential areas to the Village center connecting the population with the Community Center, Post office, Senior housing, Community Meeting House and Village Common. This project will employ several area companies and local contractors while improving crucial infrastructure to benefit the town and state for years to come.

For your convenience page numbers reference within the Scoping study are the page within the PDF as opposed to the number printed on the physical scoping study.

We look forward to working with you. I can be reached by email at [planningcommission@coventryvt.org](mailto:planningcommission@coventryvt.org) if you have any questions or need any further information.

Sincerely,  
Stephanie Rondeau  
Planning Commission Chair  
Coventry Vermont

## 2023 VTrans Bicycle/Pedestrian Program - Design/Construction Criteria Template

---

Applicant Name: **Village Of Coventry**

Project Title--Design/Construction: **Coventry Village Center Sidewalks**

### **Application Checklist – If any elements are missing, application may not be considered.**

Make sure everything is included and pages numbered.

- (1) Project Application Form (separate PDF file)

All other materials noted below to be provided in the same order as below.

- (2) Project Evaluation Criteria Documentation for the project (completed BELOW)

- (3) Project Map(s)

- (4) Budget support information (e.g. detailed cost estimate)

- (5) RPC review confirmation letter

- (6) Current letter of support from the municipal governing body acknowledging their willingness to provide the local match and future maintenance responsibility

- (7) Documentation of contact with VTrans District office if project is on the state system

- (8) Supporting Documentation (scoping study or equivalent report, maps, and drawings) Note: If the scoping study is in a publicly accessible location online, applicants may provide a link with reference to relevant pages as appropriate.

## DESIGN/CONSTRUCTION PROJECTS

- 1. Community Need—25 Points:** How does the proposed project contribute to an existing or planned bicycle and/or pedestrian network? If the proposed project is a sidewalk along a street that already has a sidewalk, explain why the redundant facility is needed. What destinations or populations are served? What walking and/or bicycling access or safety problem are you trying to solve?

Coventry Currently has inconsistent pedestrian infrastructure which includes sections of narrow sidewalk as well as areas with no sidewalks. Project would create safe access to pedestrian traffic within the village. Sidewalk would connect the residential area of the village with the community center, Meeting house, and Post office. (See Scoping Study PG 97-103.)

**16-25 Points** – Project is an important part of a pedestrian or bicycling network and serves obvious bike/ped generators and/or the project includes measures identified in the [FHWA STEP](#) initiative.

**6-15 Points** – Project is in an area of low land use density or not clearly contributing to a local network.

**0-5 Points** – Unclear how proposed facility contributes to a network or solves a safety problem

- 2. Economic Development—10 Points:** How does the project contribute to broad local community and economic development goals? How does the project contribute to ongoing local placemaking or economic development initiatives?

Guided by the 2019 Town Plan, The Town of Coventry has been exploring ways to improve the Village aesthetics while maintaining our rural heritage as well as supporting outdoor recreation opportunities within the Town. A Town-wide survey was conducted to find that residents were in support of adding sidewalks within the village for safety and accessibility within the community. Creating Capital improvements program for the village to establish cost estimate and timetable for capital projects and providing opportunities for outdoor recreation are goals outlined in the Coventry Economic Development Plan. ( See Scoping Study PG 46-47)

**6-10 Points** – Specific references to community planning or economic development documents that support the project.

**0-5 Points** – Vague or non-existent references to community planning or economic development documents that support the project

- 3. Well-supported budget —20 points:** How were the project costs developed? Are all required project elements (admin, engineering, construction, inspection) adequately budgeted for? Be sure to include backup documentation for project costs. Include reasonable contingency for inflation over the life of the project.

A scoping Study was conducted and a cost estimate was created using the Vtrans report on shared-use path and sidewalk unit costs, updated January 2020, the Vtrans 2-year Average Price List and recently bid construction projects. (See Scoping study PG 41-43)

**11-20 Points** – Cost is well documented/detailed and consistent with bid history on similar projects.

**0-10 Points** – Cost is significantly less than similar projects, no detail provided or missing costs.

- 4. Complexity—10 points:** What complexities does your proposed project have and how do you plan to address them? Response must address need for right of way, anticipated permitting, natural resource constraints or identified cultural resource (historic or archaeological) impacts anticipated for the project. If a scoping or planning report is attached, please highlight or reference the applicable sections.

Some complexities exist within the project. The streets in the village lack record layout and records of ownership of the common will need to be documented. An archeological Survey may need to be conducted as a stonewall located on the south end of main street may require review by Vtrans and the Department of Historic preservation. (See Scoping Study PG 7-8,40-41,48)

**6-10 Points** – Fewer complexities, or thorough identification of multiple complexities and specific efforts taken to address them.

**0-5 Points** – Complexities include ROW acquisition, significant permitting challenges, design constraints, significant structural components such as bridges or retaining walls, etc.



5. **Project coordination – 5 points:** To your knowledge, are there other state or local projects in the same area that might impact the project timeline and schedule for completion? Is the project on a state-maintained route? Is the funding being used for elements of a larger project funded through other sources?

This project will be within the village center and exclusively on Town roadways while extending to the shoulder of US-5 with no conflicting projects to my knowledge. (See Scoping Study PG 8)

**3-5 Points** – No conflicting projects.

**0-2 Points** – Several conflicts or coordination needs.

6. **Equity—10 Points:** How does your project directly address the needs of more vulnerable populations, specifically the needs of children, older persons, people with mobility challenges and low- or moderate-income households? What outreach was performed to include disadvantaged communities, especially low income, BIPOC, people with disabilities and others, in the planning of this project.

The Completion of this project is needed as the current sections of sidewalk are cracked and not wide enough to ensure accessibility. Sidewalks would also create safe passage for residents at the senior housing facility within the village to the post office, community Center and meeting house. Sidewalk would extend to US-5 near school for elementary students.

**6-10 Points** – Project that provides direct access to a vulnerable population e.g. a sidewalk from an underserved community, a senior center, or community center to a downtown or clear documentation of outreach to disadvantaged populations.

**1-5 Points** – Equity is only addressed in broad terms.

**0 Points** – Equity not addressed.

7. **Multi-modal potential —5 points:** How does your proposed project coordinate with other modes of transportation? Will it improve walking or bicycling access to transit, rail service or park and ride facilities?

Many residents and visitors walk and bike the back roads of Coventry to include the Covered bridge road and Hermanville road. Installation of sidewalks within the village would encourage people to park within the village center and walking to these roads decreasing vehicle traffic while encourage safe recreational opportunities. This project will also extend to US-5 where the Town is working with Vtrans to possibly decrease the speed limit and install a crosswalk creating a safe route for kids to walk and bike to school in the future.

**5 Points** – Project provides direct access to another transportation mode e.g. a sidewalk that connects directly to a transit stop or park and ride

**0-4 Points** – Project is part of a larger plan to connect to another transportation mode in the near future

8. **State designated centers —5 points:** Is the proposed project within a state designated center?

This Project is proposed entirely within a designated Village Center.

**5 Points** – Project is contained primarily within a state designated center (such as downtowns, villages, or neighborhood growth centers recognized by the Vermont Department of Housing and Community Development).

**0-4 Points** – Project leads to, but is not primarily within, a state designated center.

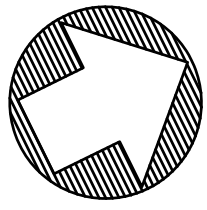
*Designated centers can be confirmed on the state Planning Atlas - <http://maps.vermont.gov/ACCD/PlanningAtlas/index.html?viewer=PlanningAtlas>.*

9. **Project Management—10 Points:** Describe your plan for keeping this project moving forward. What management practices do you now have, or plan to put in place, to successfully administer the project from design through construction? Who will manage the project (municipal staff, RPC, consultant, or other)?

A committee has been formed within the Planning Commission and a detailed timeline will be created to ensure the project is to progress as intended. Planning Commission will work with Select board and municipal staff to keep on schedule. (See Scoping Study PG 46-47)

**6-10 Points** – Plan outlined for managing the project, including adequate or additional staffing.

**0-5 Points** – Vague or ill-defined management plan.



DUFRESNE GROUP  
CONSULTING ENGINEERS

Suite 200, 56 Main Street  
Springfield, Vermont 05156  
Tel: (802) 674-2904 Fax: (802) 674-2913  
E-mail: info@dufresnegroup.com  
Home page: www.dufresnegroup.com

Project #	7121023
Project Mgr.	AJD
Design	AJD
Drawn	JLG
Checked by	AJD
Date	OCTOBER, 2022
Scale	AS SHOWN
Approved by	APPROVED BY

THE DRAWINGS FOR THIS PROJECT SHALL NOT BE REUSED OR ALTERED IN ANY WAY WITHOUT THE WRITTEN APPROVAL AND AUTHORITY OF DUFRESNE GROUP. ANY REVISIONS SHALL BE MADE BY THE ENGINEER.  
DUFRESNE GROUP ©

SIDEWALK SCOPING STUDY  
STP BP 20(8)

FIGURE 4-5  
SEGMENT 2 - ALTERNATIVE 2

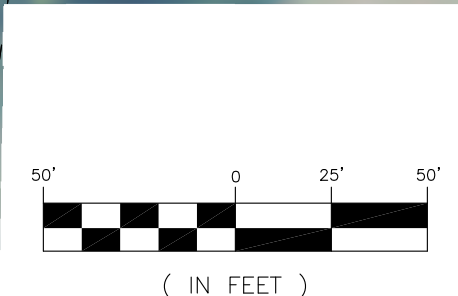
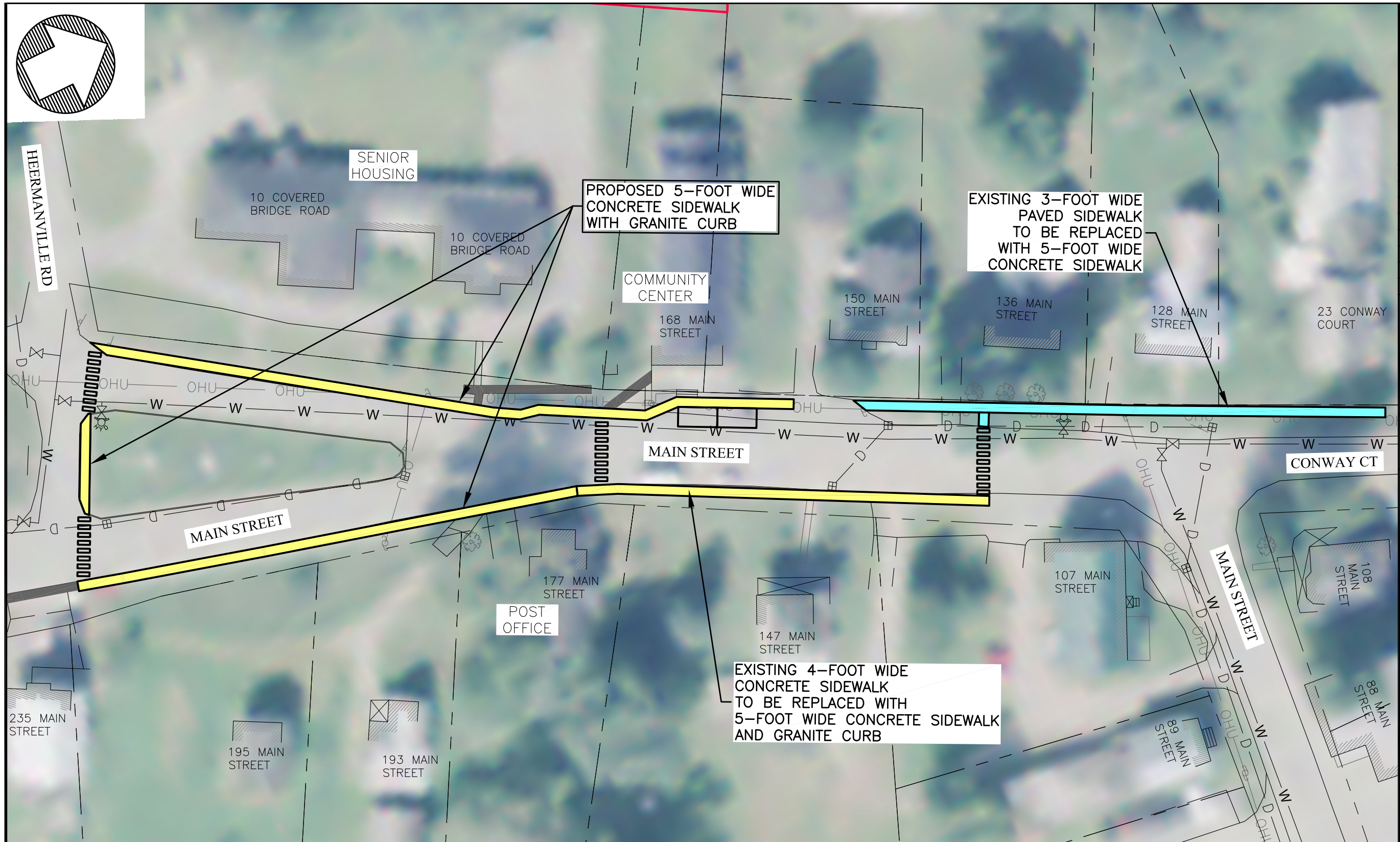
COVENTRY, VERMONT

4-5

DWG. NO. SEGMENT 2\_Figure 4

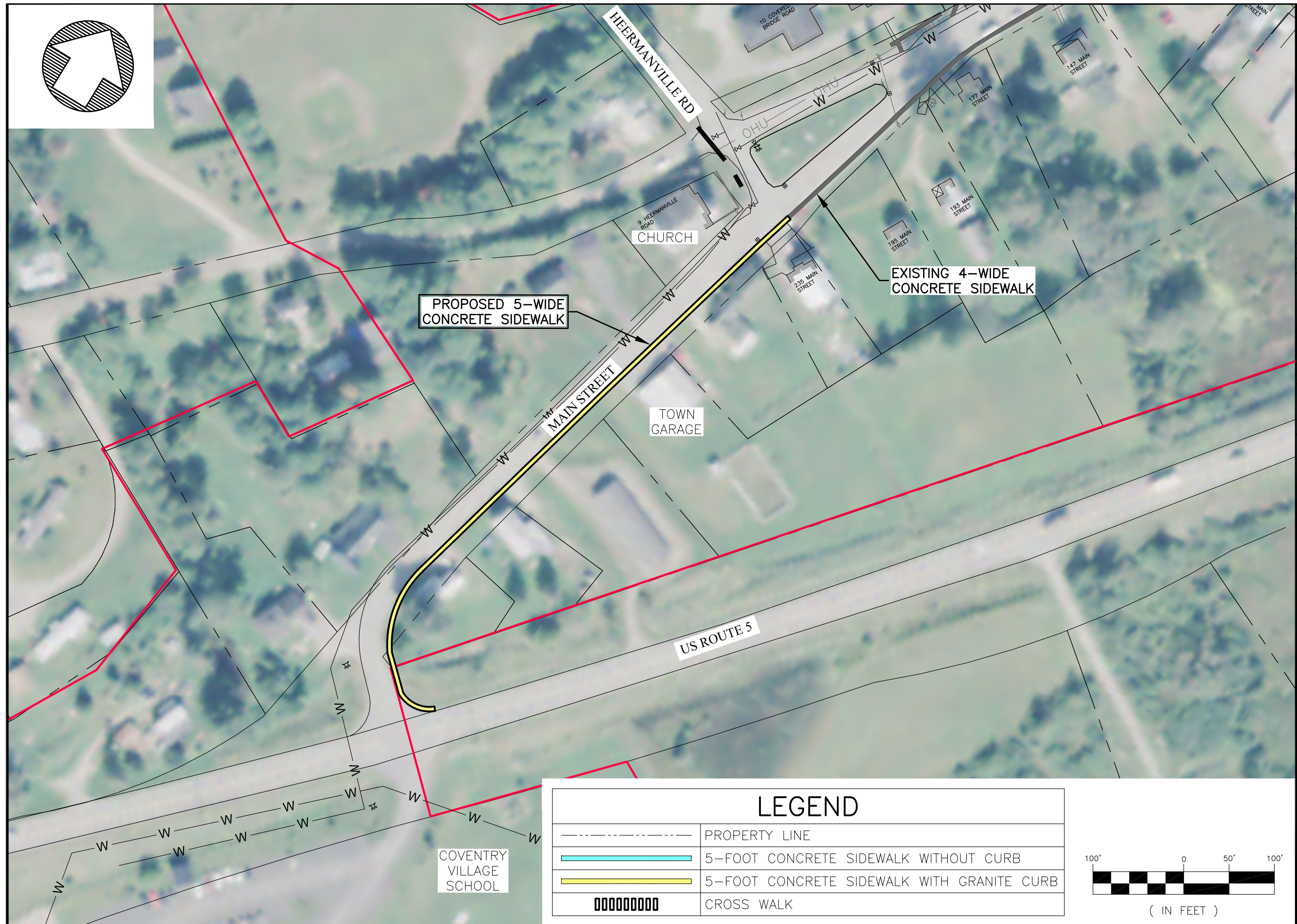
SHEET 1 OF 1

FILE: J:\Coventry VT\7121023 Sidewalk Scoping\CAD\SEGMENT 2\_Figure 4-5.dwg Feb 13, 2023 -- 12:51pm



LEGEND	
-----	PROPERTY LINE
—————	5-FOOT CONCRETE SIDEWALK WITHOUT CURB
—————	5-FOOT CONCRETE SIDEWALK WITH GRANITE CURB
	CROSS WALK

FILE: J:\Coventry VT\7121023 Sidewalk Scoping\CAD\SEGMENT 3\_Figure 3-11.dwg Feb 09, 2023 -- 9:46am



**DUFRESNE GROUP**  
CONSULTING ENGINEERS  
Suite 200, 56 Main Street  
Springfield, Vermont 05156  
Tel: (802) 674-2904 Fax: (802) 674-2913  
E-mail: info@dufresnegroup.com  
Home page: www.dufresnegroup.com

Project #	7121023
Project Mgr.	AJD
Design	AJD
Drawn	JLG
Checked by	AJD
Date	OCTOBER, 2022
Scale	AS SHOWN
Approved by	APPROVED BY

THE DRAWINGS FOR THIS PROJECT SHALL NOT BE REUSED OR ALTERED IN ANY WAY WITHOUT THE WRITTEN APPROVAL AND AUTHORITY OF DUFRESNE GROUP ANY REVISIONS SHALL BE MADE BY THE ENGINEER.  
DUFRESNE GROUP ©

SIDEWALK SCOPING STUDY  
STP BP 20(8)

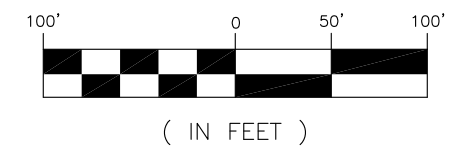
**FIGURE 4-10**  
**SEGMENT 3 - ALTERNATIVE 3**

COVENTRY, VERMONT

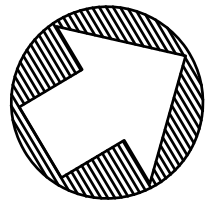
**4-10**

DWG. NO. SEGMENT 3\_Figure 3  
SHEET 1 OF 1

LEGEND	
	PROPERTY LINE
	5-FOOT CONCRETE SIDEWALK WITHOUT CURB
	5-FOOT CONCRETE SIDEWALK WITH GRANITE CURB
	CROSS WALK



COVENTRY VILLAGE SCHOOL



DUFRESNE GROUP  
CONSULTING ENGINEERS  
Suite 200, 56 Main Street  
Springfield, Vermont 05156  
Tel: (802) 674-2904 Fax: (802) 674-2913  
E-mail: info@dufresnegroup.com  
Home page: www.dufresnegroup.com

Project #	7121023
Project Mgr.	AJD
Design	AJD
Drawn	JLG
Checked by	AJD
Date	FEBRUARY 2023
Scale	AS SHOWN
Approved by	APPROVED BY

THE DRAWINGS FOR THIS PROJECT SHALL NOT BE REUSED OR ALTERED IN ANY WAY WITHOUT THE WRITTEN APPROVAL AND AUTHORITY OF DUFRESNE GROUP ANY REVISIONS SHALL BE MADE BY THE ENGINEER.  
DUFRESNE GROUP ©

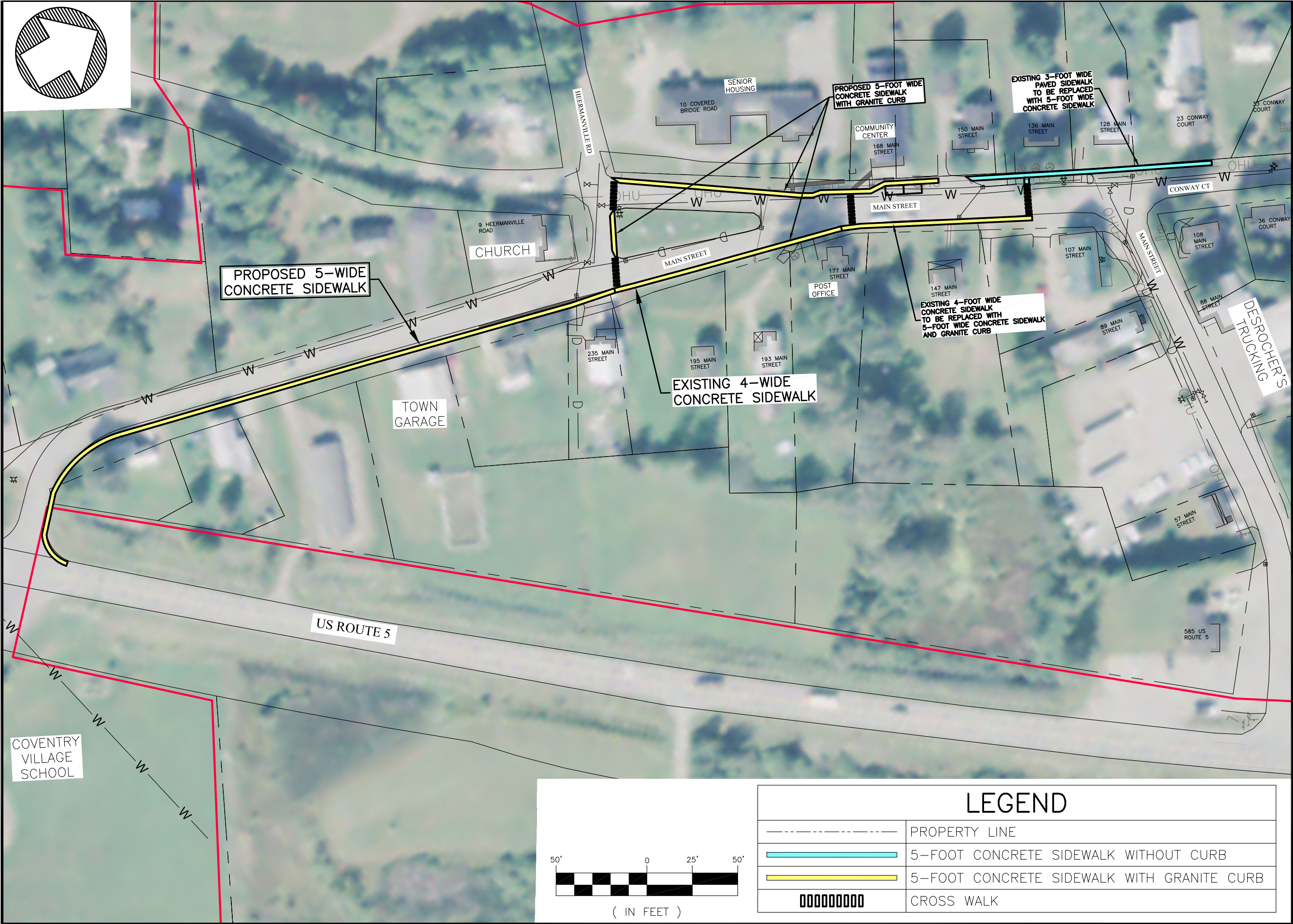
SIDEWALK SCOPING STUDY  
STP BP 20(8)

FIGURE 4-11  
RECOMMENDED PROJECT

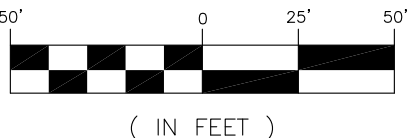
COVENTRY, VERMONT

4-11

DWG. NO. Figure 4-11.dwg  
SHEET 1 OF 1

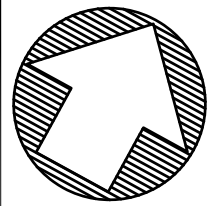
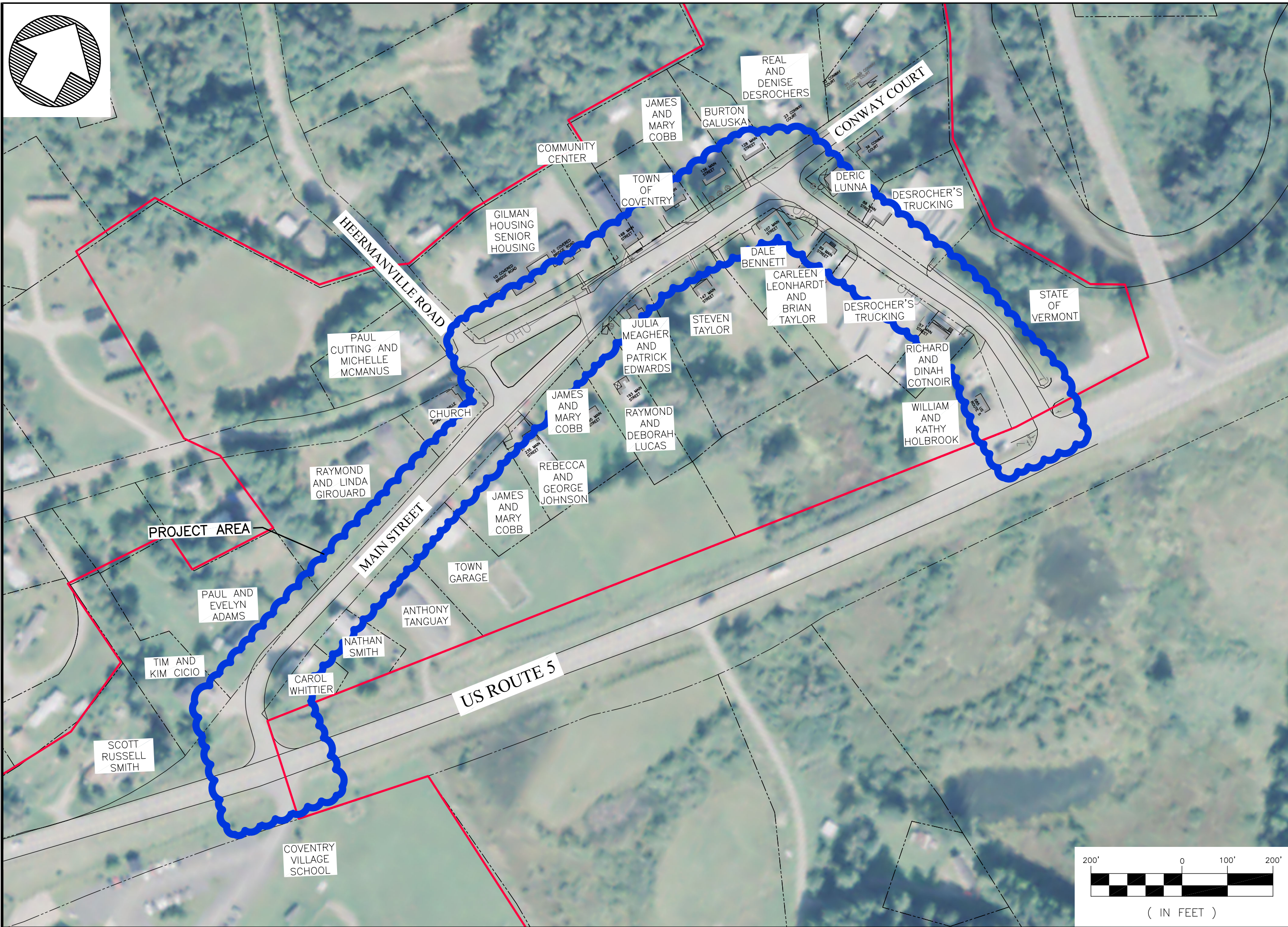


FILE: J:\Coventry VT\7121023 Sidewalk Scoping\CAD\Figure 4-11.dwg Feb 09, 2023 -- 4:09pm



LEGEND	
-----	PROPERTY LINE
—————	5-FOOT CONCRETE SIDEWALK WITHOUT CURB
—————	5-FOOT CONCRETE SIDEWALK WITH GRANITE CURB
	CROSS WALK

FILE: J:\Coventry VT\7121023 Sidewalk Scoping\CAD\PROJECT AREA\_Figure 4-1.dwg Feb 09, 2023 -- 8:43am



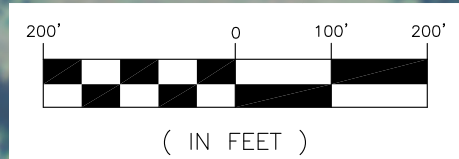
**DUFRESNE GROUP**  
 CONSULTING ENGINEERS  
 Suite 200, 56 Main Street  
 Springfield, Vermont 05156  
 Tel: (802) 674-2904 Fax: (802) 674-2913  
 E-mail: info@dufresnegroup.com  
 Home page: www.dufresnegroup.com

Project #	7121023
Project Mgr.	AJD
Design	AJD
Drawn	JLG
Checked by	AJD
Date	OCTOBER, 2022
Scale	AS SHOWN
Approved by	APPROVED BY

THE DRAWINGS FOR THIS PROJECT SHALL NOT BE REUSED OR ALTERED IN ANY WAY WITHOUT THE WRITTEN APPROVAL AND AUTHORITY OF DUFRESNE GROUP ANY REVISIONS SHALL BE MADE BY THE ENGINEER.  
 DUFRESNE GROUP ©

SIDEWALK SCOPING STUDY  
 STP BP 20(8)  
**FIGURE 5-1**  
 PROPERTY OWNERSHIP  
 COVENTRY, VERMONT

**5-1**





*Image 7-2: Archaeologically Sensitive Area at north end of Main Street,  
Figure 65 from UVM CAP Report*

2. Public Lands

No impacts to public lands are anticipated.

3. Agricultural Lands

As the project is within a developed downtown, no impacts to agricultural lands are anticipated.

## VIII. Preliminary Project Cost Estimates

---

Preliminary project cost estimates the preferred alternatives are shown in Tables 8-1 through 8-3. The cost estimates were developed using the VTrans Report on Shared-Use Path and Sidewalk Unit Costs, updated January 2020, the VTrans 2-Year Averaged Price List and recently bid construction projects.



Coventry Village Sidewalk Scoping Study

Table 8-1  
Segment 2 – Alternative 2 – Sidewalk both sides to end of Village Common  
Construction Cost Estimate

DESCRIPTION	ESTIMATED QUANTITY	UNITS	UNIT PRICE	TOTAL COST
5' wide, 8" Thick Concrete Sidewalk	560.00	SY	\$ 130.00	\$ 72,800.00
Granite Curb	900.00	LF	\$ 50.00	\$ 45,000.00
Striping - Durable 4" White Line	900.00	LF	\$ 2.40	\$ 2,160.00
Crosswalks	140.00	LF	\$ 25.00	\$ 3,500.00
Detectable Warning	80.00	SF	\$ 42.00	\$ 3,360.00
Pavement	300.00	SY	\$ 65.00	\$ 19,500.00
Traffic Control	1.00	LS	\$ 8,000.00	\$ 8,000.00
Signs	4.00	EA	\$ 1,500.00	\$ 6,000.00
Miscellaneous Work & Cleanup, Mob. & Demob.	1.00	LS	\$ 30,880.00	\$ 30,880.00
<b>Subtotal Construction Cost</b>				<b>\$ 191,200.00</b>
Contingency (20%)				\$ 38,200.00
Inflation (5 yrs at 4%)				\$ 38,200.00
<b>Total Construction Cost</b>				<b>\$ 267,600.00</b>
<b>Engineering:</b>				
Design Phase Engineering (15% of Total Construction Cost)				\$40,000
Construction Phase Engineering (15% of Total Construction Cost)				\$40,000
Local Project Management (10% of Total Construction Cost)				\$27,000
Legal and Fiscal (3% of Total Construction Cost)				\$8,000
			<b>Total Project Cost</b>	<b>\$ 382,600.00</b>

Coventry Village Sidewalk Scoping Study

Table 8-2  
Segment 3 – Alternative 3 – Sidewalk East Side  
Construction Cost Estimate

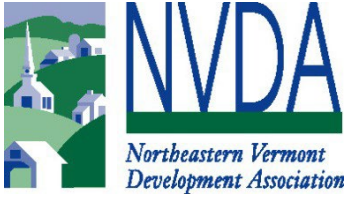
DESCRIPTION	ESTIMATED QUANTITY	UNITS	UNIT PRICE	TOTAL COST
5' wide, 8" Thick Concrete Sidewalk	430.00	SY	\$ 130.00	\$ 55,900.00
Granite Curb	760.00	LF	\$ 50.00	\$ 38,000.00
Striping - Durable 4" White Line	760.00	LF	\$ 2.40	\$ 1,824.00
Pavement	260.00	SY	\$ 65.00	\$ 16,900.00
Traffic Control	1.00	LS	\$ 5,000.00	\$ 5,000.00
Miscellaneous Work & Cleanup, Mob. & Demob.	1.00	LS	\$ 23,576.00	\$ 23,576.00
Subtotal Construction Cost				\$ 141,200.00
Contingency (20%)				\$ 28,300.00
Inflation (5 yrs at 4%)				\$ 28,200.00
Total Construction Cost				\$ 197,700.00
Engineering:				
Design Phase Engineering (15% of Total Construction Cost)				\$30,000
Construction Phase Engineering (15% of Total Construction Cost)				\$30,000
Local Project Management (10% of Total Construction Cost)				\$20,000
Legal and Fiscal (3% of Total Construction Cost)				\$6,000
<b>Total Project Cost</b>				<b>\$ 283,700.00</b>

Table 8-3  
Total Project Cost Estimate

Alternative	Estimated Total Project Cost
Segment 1	
Alternative 1	\$ -
Segment 2	
Alternative 2	\$ 382,600.00
Segment 3	
Alternative 3	\$ 283,700.00
<b>Total</b>	<b>\$ 666,300.00</b>

The total project cost estimate shown in Table 8-3 includes Construction, Contingency, Final Design Engineering, Construction Phase Engineering, Local Project Management and Legal and Fiscal expenses for construction of improvements. The estimated construction costs are preliminary and are not based on detailed plans and specifications. Actual cost may vary substantially from these estimates. Contingencies are based on approximately 20% of the construction cost at the preliminary planning stage.

It is important to note that the construction cost and total project cost estimates are developed based on the project being funded by a State or federally funded program. These programs typically have requirements that increase the total project cost.



June 8, 2023

Peter Pochop  
Bicycle and Pedestrian Program Manager  
Municipal Assistance Bureau, Highway Division  
VT Agency of Transportation  
219 North Main St  
Barre, VT 05641

*RE: Coventry Sidewalk/ Pedestrian Improvement Project*

Dear Peter,

I am writing in support of an application for a Bicycle and Pedestrian Grant to upgrade existing sidewalks and improve safety for all users of the transportation network in the Village of Coventry in the Town of Coventry. The project will seek to install ~1700ft of sidewalk and crosswalk improvements and upgrades on Main St. and is a continuation of a multi-year planning effort by the Town of Coventry. This project is the first of part of a larger effort to connect the village to the school.

The project is supported by the regional plan in numerous ways. Among them;

- **Ensure Availability of Alternative Transportation Modes to Address Residents' Needs**
- **Promote transportation in growth centers, downtowns, and village centers that feature bicycle, pedestrian and other non-motorized forms of transportation.**

NVDA strongly supports the selection of this project for funding through the Bicycle and Pedestrian Program.

Sincerely,

--

Douglas C. Morton  
Senior Transportation Planner  
Northeastern Vermont Development Association  
P.O. Box 630  
36 Eastern Ave  
St Johnsburry VT 05819  
802-748-1221  
[dmorton@nvda.net](mailto:dmorton@nvda.net)

**TMP CHECKLIST**

**Purpose:** To make a preliminary determination of whether the following issues are present or should be considered during project development through a more detailed TMP.

**Project Name and Number/PIN:** Coventry STP BP 20(8)

**Initial Project Significance Level** (as determined in Table 4): \_\_\_\_\_

**Project Manager during Project Definition:**

Name: Jon Lemieux Date: \_\_\_\_\_

**Modified or Approved by** (Project Manager at Preliminary Design for Significant Projects):

Name: Andrea Day, Dufresne Group Date: \_\_\_\_\_

**Modified or Approved by** (Project Manager at PS&E for Significant Projects):

Name: \_\_\_\_\_ Date: \_\_\_\_\_

**Project Description** (Location, Activity, Anticipated Duration):

	Yes	No	Poss	N/A	Comments
1. Does the project require a long-term (greater than 3 days) <sup>1</sup> lane or roadway/bridge closure?	<input type="checkbox"/>	<input checked="" type="checkbox"/>	<input type="checkbox"/>	<input type="checkbox"/>	
2. Are there any restrictions or considerations regarding construction timeframes due to traffic concerns (e.g., time of day, site specific time of year limits)?	<input type="checkbox"/>	<input checked="" type="checkbox"/>	<input type="checkbox"/>	<input type="checkbox"/>	
3. Can typical applications for traffic control be used? Are there any limitations to when typical applications can be used (time of year, times, days)?	<input type="checkbox"/>	<input checked="" type="checkbox"/>	<input type="checkbox"/>	<input type="checkbox"/>	
4. Is there a sidewalk, pedestrian/bicycle lane, path, trail, or access that needs to be maintained during construction?	<input checked="" type="checkbox"/>	<input type="checkbox"/>	<input type="checkbox"/>	<input type="checkbox"/>	Maintain existing sidewalks or provide alternative pedestrian routes.
5. Is a speed reduction proposed (consistent with state guidance)?	<input type="checkbox"/>	<input checked="" type="checkbox"/>	<input type="checkbox"/>	<input type="checkbox"/>	
6. Will temporary roadways or additional width be needed on culverts, bridges, or shoulders to maintain traffic?	<input type="checkbox"/>	<input checked="" type="checkbox"/>	<input type="checkbox"/>	<input type="checkbox"/>	
7. Will construction impact access to businesses?	<input type="checkbox"/>	<input checked="" type="checkbox"/>	<input type="checkbox"/>	<input type="checkbox"/>	
8. Are there other projects (utility, district maintenance, construction, municipal) in the area that should be coordinated or avoided?	<input type="checkbox"/>	<input checked="" type="checkbox"/>	<input type="checkbox"/>	<input type="checkbox"/>	

	Yes	No	Poss	N/A	Comments
9. Will/Can the traffic be reasonably detoured? If no or N/A, proceed to #10. If yes or possibly:	<input checked="" type="checkbox"/>	<input type="checkbox"/>	<input type="checkbox"/>	<input type="checkbox"/>	Traffic can be routed to either access off US 5.
a. Is the detour route roadway type equivalent to closed roadway?	<input type="checkbox"/>	<input checked="" type="checkbox"/>	<input type="checkbox"/>	<input type="checkbox"/>	
b. Is the local alternate detour route in good condition?	<input checked="" type="checkbox"/>	<input type="checkbox"/>	<input type="checkbox"/>	<input type="checkbox"/>	
c. Will the detour route have a detrimental impact on emergency vehicles, school buses, or other sensitive traffic?	<input type="checkbox"/>	<input checked="" type="checkbox"/>	<input type="checkbox"/>	<input type="checkbox"/>	
d. Are there load limit restrictions on the detour?	<input type="checkbox"/>	<input checked="" type="checkbox"/>	<input type="checkbox"/>	<input type="checkbox"/>	
e. Are there bridge/culvert width or height restrictions on the detour?	<input type="checkbox"/>	<input checked="" type="checkbox"/>	<input type="checkbox"/>	<input type="checkbox"/>	
f. Are modifications needed at intersections on detour/alternate routes?	<input type="checkbox"/>	<input checked="" type="checkbox"/>	<input type="checkbox"/>	<input type="checkbox"/>	
10. Will traffic signal timing need to be adjusted for the project (with or without a detour)?	<input type="checkbox"/>	<input checked="" type="checkbox"/>	<input type="checkbox"/>	<input type="checkbox"/>	
11. Are there truck facilities or routes that would be impacted by the project or by a detour (turning radii, weight restrictions, etc.)?	<input type="checkbox"/>	<input checked="" type="checkbox"/>	<input type="checkbox"/>	<input type="checkbox"/>	
12. Are there special events or traffic generators (schools and bus routes, large employers, hospitals) that may be affected by the project and/or detour?	<input type="checkbox"/>	<input checked="" type="checkbox"/>	<input type="checkbox"/>	<input type="checkbox"/>	
13. Will the emergency vehicle routing, mail delivery, school bus routes, or trash services be interrupted by the project (with or without a detour)?	<input checked="" type="checkbox"/>	<input type="checkbox"/>	<input type="checkbox"/>	<input type="checkbox"/>	Coventry Post Offices is in project area.
14. Are there specific stakeholders to engage regarding the work zone impacts?	<input checked="" type="checkbox"/>	<input type="checkbox"/>	<input type="checkbox"/>	<input type="checkbox"/>	Town of Coventry offices are within project area.
15. Does the project occur within a high crash location?	<input type="checkbox"/>	<input checked="" type="checkbox"/>	<input type="checkbox"/>	<input type="checkbox"/>	
16. Are there other maintenance of traffic issues to consider? Specify.	<input type="checkbox"/>	<input checked="" type="checkbox"/>	<input type="checkbox"/>	<input type="checkbox"/>	

1. MUTCD definition of long-term work is occupying a location more than 3 days.

**Additional Narrative for Projects with issues identified above:**